

Piano Lessons In Your Home, Inc.

Review Worksheet - Book 3

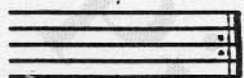
Fill in the blanks:

This **>** is an _____ and means _____.

When a **C** is in place of a time signature, this means: _____.


If you were playing the notes in a song **very short**, you would be playing _____.


You can tell notes are to be played short by the _____ under or above each note.



← This is called a _____.

Longer **slurs** are sometimes called _____.

This  is a _____ and means _____.

This  is a _____ and means _____.

If a song you were playing had a lot of **slurs** and was supposed to be **smooth**, you wouldn't be playing **staccato**, you'd be playing _____.

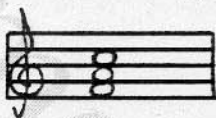
Whole steps or Half steps?

From C to C# _____ From B to C _____ From E to F# _____

From F to G _____ From G# to A# _____ From D# to E _____

What is the pattern of whole steps and half steps for a **major scale**?

If a chord looks like this:



it is a _____ chord,

not a _____ chord.

6 means that there are _____ beats per measure and the _____ gets the beat.

8

The **weak beats** of a measure are usually: (1,2,3 or 4)? _____

When the weak beats are **accented**, this is called _____.

When hands go in the **same direction** this is _____ motion.

When hands go in **opposite directions** this is _____ motion.

When a song sounds **happy**, you are playing in a _____ key. (major or minor?)

If you are playing a song in a **minor key**, it sounds _____.

If a sharp or a flat is just added in front of a note, and is **not** in the key signature, it is called a what? _____

Name notes:

